



MEGA HOME
Closet



11245 SE Highway 212, Clackamas, OR 97015 | Tel 503-334-2050 | <https://megahomeor.com/>

Mega Home was founded by a team of seasoned professionals who possessed a clear vision and strategic plan for the company, having already achieved success in building businesses in California and Washington State. Setting its sights on the wholesale operations of building materials products, Mega Home's primary focus centered on cabinets, countertops, flooring, and related items. With a profound understanding of the market and an unwavering commitment to meeting customer demands, Mega Home embarked on a journey of growth and achievement.

As a leading supplier, our ambition extends beyond delivering excellence in products and service. We aim to establish numerous manufacturing distributors across the country, reinforcing our presence and reach. A pivotal advantage that sets Mega Home apart is our ownership of a manufacturing factory, providing us with a significant edge in upholding rigorous quality standards and customizing products to meet the specific requirements of our customers.

Our mission at Mega Home is to provide our valued customers with an exceptional experience that goes beyond mere transactions. We pride ourselves on offering competitive prices, unparalleled quality, and top-notch service. From the moment you engage with us, you'll notice our commitment to excellent service, ensuring that every customer receives personalized attention and assistance throughout their journey with us. At Mega Home, we are dedicated to not only meeting your needs but also exceeding your expectations.

Join us at Mega Home and let us help you discover the perfect solutions for your cabinet, floor, and countertop needs. Transform your living spaces with our top-quality products and unparalleled service and experience a home like never before.



Cabinet Warranty 5-Year Limited

Mega Home Inc. provides a warranty for cabinetry, door hinges, and drawer glides to the original consumer purchaser. This warranty guarantees that the mentioned products will be free from defects in material and workmanship under normal use for a period of 5 years from the purchase date (Proof of Purchase required). However, please note that this warranty is only applicable to the original purchasing consumer within the United States and is non-transferable. Any changes or modifications to this warranty can only be made by an authorized officer of Mega Home Inc.

This warranty does not cover normal wear and tear, damage or defects caused by accidents, misuse, abuse, or lack of necessary maintenance; nor does it cover alteration, modification, improper installation, improper handling / storage, environmental conditions, nor any labor expenses.

A vendor, at our option, may elect to repair or replace with a functionally equivalent product any product covered by this warranty. Some replacement parts are subject to availability and may differ from the original parts received. Return of defective product may be required for a replacement to be issued. Repair parts or replacement parts are at the expense of the vendor, but customer shall bear all other expenses. These expenses may include, but are not limited to, cost of removal and reinstallation of products, labor expenses, etc. Further, we reserve the right to modify or alter any Product design, specifications, or materials without obligation to make similar changes to Products previously manufactured or sold by Us.

Due to the unique nature of wood, no two pieces are alike. Variations in color and grain pattern are inherent characteristics that enhance its natural beauty and are not considered imperfections. Over time, environmental factors like light, moisture, cleaners, and smoke may cause the darkening or mellowing of the cabinet's appearance, which is a natural process and should be expected. It's essential to understand that this warranty does not cover the natural aging, darkening, mellowing of wood color, or inherent growth characteristics of the wood.

No dealer, agent, contractor, or installer has the authority to alter or extend the above warranty. The statements mentioned here constitute the only expressed warranties extended by Mega Home Inc., replacing any other warranties. All styles, finishes, hardware, and specifications are subject to change without prior notice from Mega Home Inc. Mega Home Inc. is not responsible for any typographic errors in its product materials.



**Closet Barcelona Oak
(CBO)**



**Closet Maine Oak
(CMO)**



**Closet Winter White
(CWW)**



CBO



CMO



CWW



CN- MIR1437



CN- GD



CN-BSK



CN-OD



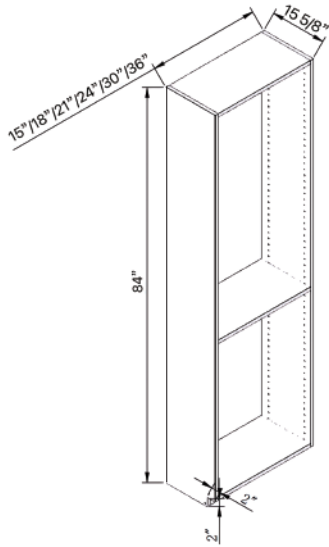
CN-TR

Component Description



| | |
|----|--|
| 1 | Toe Kick: Thickness=3/4" , Height=3" P2 Level Particle Board. |
| 2 | Bottom Panel: Thickness=3/4", P2 Level Particle Board , Connected by Cam Lock + Wooden Dowel. |
| 3 | Deep Drawer: Drawer Front's Height 12 5/8" , Shallow Drawer's Depth 11 13/16" , Deep Drawer's Depth 20" , with Under Mounted Drawer Glide. |
| 4 | Shallow Drawer: Drawer Front's Height 6 1/4" , Shallow Drawer's Depth 11 13/16" , Deep Drawer's Depth 20" , with Under Mounted Drawer Glide. |
| 5 | Shelf: Thickness=3/4", P2 Level Particle Board |
| 6 | Shoe Shelf: Thickness=3/4", P2 Level Particle Board , Front Aluminum Baffle. |
| 7 | Back Panel: Thickness=3/8", P2 Level Particle Board. |
| 8 | Closet Rod: Install with Zinc Alloy Support Base, The aluminum Rod with PVC Anti Slip Strips, Surface Water-based Paint Treatment. |
| 9 | Top Panel: Thickness=3/4", P2 Level Particle Board , Connected by Cam Lock + Wooden Dowel. |
| 10 | Back Enforced Rail: Thickness=3/4" , Height=3", P2 Level Particle Board. |
| 11 | Left Side Panel: Thickness=3/4", P2 Level Particle Board, Shallow Side Panel 15 5/8", Deep Side Panel 24". |
| 12 | Right Side Panel: Thickness=3/4", P2 Level Particle Board, Shallow Side Panel 15 5/8", Deep Side Panel 24". |

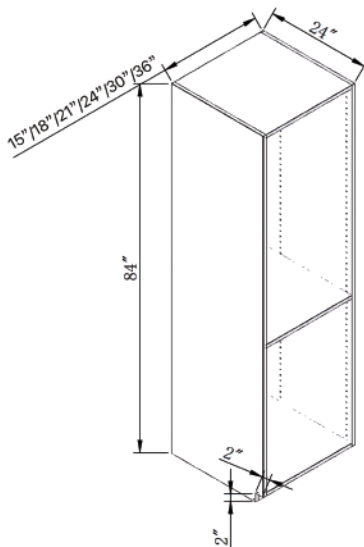
CP15**



| Item | W | H | D |
|--------|----|----|--------|
| CP1515 | 15 | 84 | 15 3/8 |
| CP1815 | 18 | 84 | 15 3/8 |
| CP2115 | 21 | 84 | 15 3/8 |
| CP2415 | 24 | 84 | 15 3/8 |
| CP3015 | 30 | 84 | 15 3/8 |
| CP3615 | 36 | 84 | 15 3/8 |

The side panel is available in two options:
A standard panel or a luxury LED side panel.

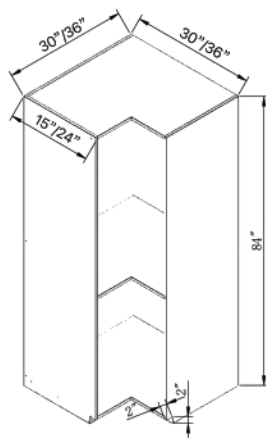
CP24**



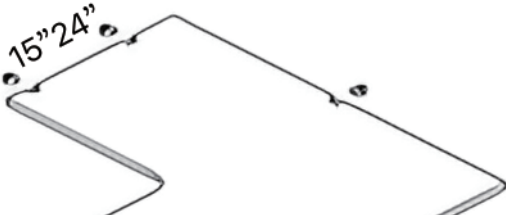
| Item | W | H | D |
|--------|----|----|----|
| CP1524 | 15 | 84 | 24 |
| CP1824 | 18 | 84 | 24 |
| CP2124 | 21 | 84 | 24 |
| CP2424 | 24 | 84 | 24 |
| CP3024 | 30 | 84 | 24 |
| CP3624 | 36 | 84 | 24 |

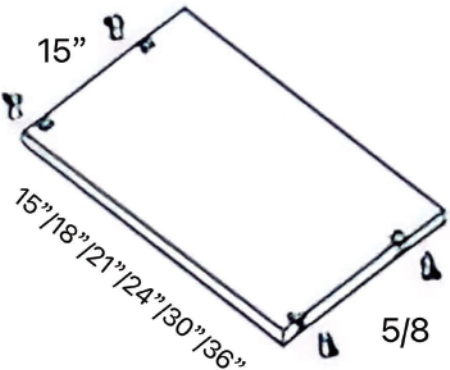
The side panel is available in two options:
A standard panel or a luxury LED side panel.

CPER

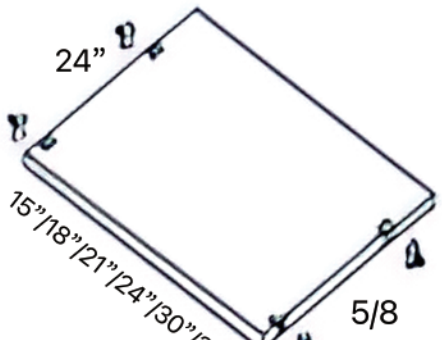


| Item | W | H | D |
|----------|----|----|----|
| CPER3015 | 30 | 84 | 15 |
| CPER3615 | 36 | 84 | 15 |
| CPER3024 | 30 | 84 | 24 |
| CPER3624 | 36 | 84 | 24 |

| ER Shelf | Item |
|---|---------|
|  | S3015ER |
| | S3615ER |
| | S3024ER |
| | S3624ER |

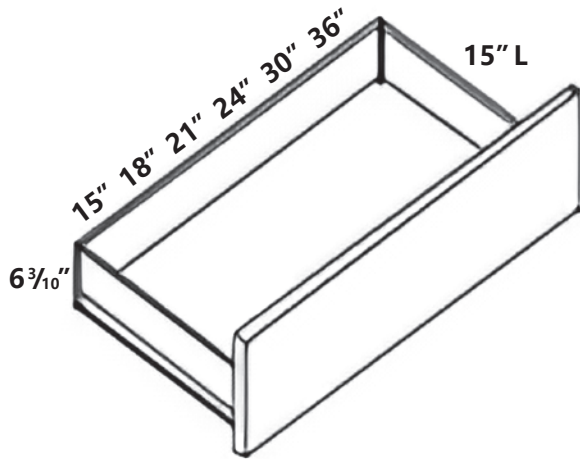
| Shelf **15 | Item | W | H | D |
|--|-------|----|----|-----|
|  | S1515 | 15 | 15 | 5/8 |
| | S1815 | 18 | 15 | 5/8 |
| | S2115 | 21 | 15 | 5/8 |
| | S2415 | 24 | 15 | 5/8 |
| | S3015 | 30 | 15 | 5/8 |
| | S3615 | 36 | 15 | 5/8 |

Touch switch" refers to the LED shelf panel.

| Shelf **24 | Item | W | H | D |
|---|-------|----|----|-----|
|  | S1524 | 15 | 24 | 5/8 |
| | S1824 | 18 | 24 | 5/8 |
| | S2124 | 21 | 24 | 5/8 |
| | S2424 | 24 | 24 | 5/8 |
| | S3024 | 30 | 24 | 5/8 |
| | S3624 | 36 | 24 | 5/8 |

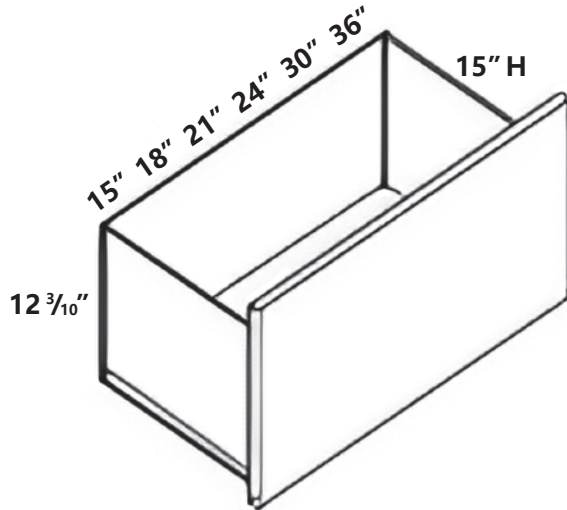
Touch switch" refers to the LED shelf panel.

DR15L**



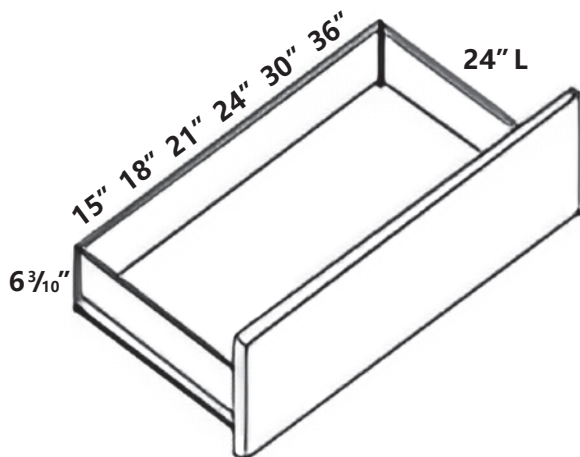
| Item | W | H | D |
|---------|----|--------------------------------|----|
| DR1515L | 15 | 6 ³ / ₁₀ | 15 |
| DR1815L | 18 | 6 ³ / ₁₀ | 15 |
| DR2115L | 21 | 6 ³ / ₁₀ | 15 |
| DR2415L | 24 | 6 ³ / ₁₀ | 15 |
| DR3015L | 30 | 6 ³ / ₁₀ | 15 |
| DR3615L | 36 | 6 ³ / ₁₀ | 15 |

DR15H**



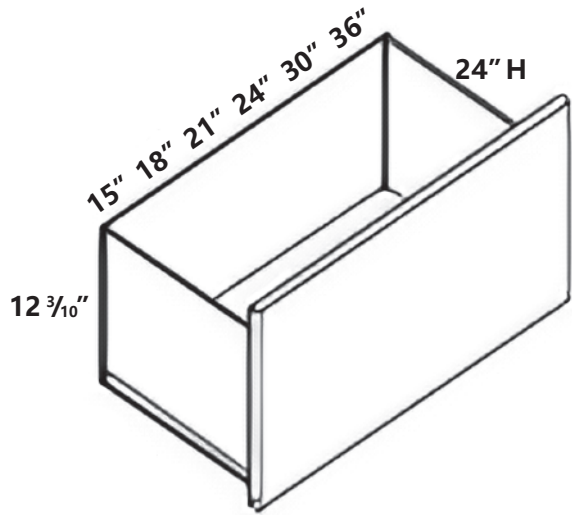
| Item | W | H | D |
|---------|----|---------------------------------|----|
| DR1515H | 15 | 12 ³ / ₁₀ | 15 |
| DR1815H | 18 | 12 ³ / ₁₀ | 15 |
| DR2115H | 21 | 12 ³ / ₁₀ | 15 |
| DR2415H | 24 | 12 ³ / ₁₀ | 15 |
| DR3015H | 30 | 12 ³ / ₁₀ | 15 |
| DR3615H | 36 | 12 ³ / ₁₀ | 15 |

DR24L**



| Item | W | H | D |
|---------|----|--------------------------------|----|
| DR1524L | 15 | 6 ³ / ₁₀ | 24 |
| DR1824L | 18 | 6 ³ / ₁₀ | 24 |
| DR2124L | 21 | 6 ³ / ₁₀ | 24 |
| DR2424L | 24 | 6 ³ / ₁₀ | 24 |
| DR3024L | 30 | 6 ³ / ₁₀ | 24 |
| DR3624L | 36 | 6 ³ / ₁₀ | 24 |

DR24H**



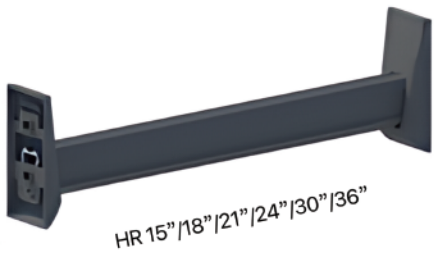
| Item | W | H | D |
|---------|----|---------------------------------|----|
| DR1824H | 15 | 12 ³ / ₁₀ | 24 |
| DR1824H | 18 | 12 ³ / ₁₀ | 24 |
| DR2124H | 21 | 12 ³ / ₁₀ | 24 |
| DR2424H | 24 | 12 ³ / ₁₀ | 24 |
| DR3024H | 30 | 12 ³ / ₁₀ | 24 |
| DR3624H | 36 | 12 ³ / ₁₀ | 24 |

Slide



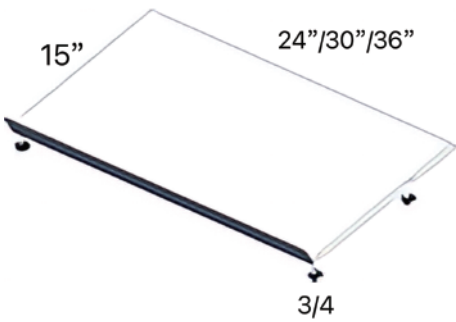
| Item | W | H | D |
|----------------|-----|---|----|
| 350-For 15 " D | 350 | | 15 |
| 500-For 24 " D | 500 | | 24 |

CN-HR



| Item | W | H | D |
|------|----|---|---|
| HR15 | 15 | | |
| HR18 | 18 | | |
| HR21 | 21 | | |
| HR24 | 24 | | |
| HR30 | 30 | | |
| HR36 | 36 | | |

SR15



| Item | W | H | D |
|--------|----|-----|----|
| SR2415 | 24 | 3/4 | 15 |
| SR3015 | 30 | 3/4 | 15 |
| SR3615 | 36 | 3/4 | 15 |

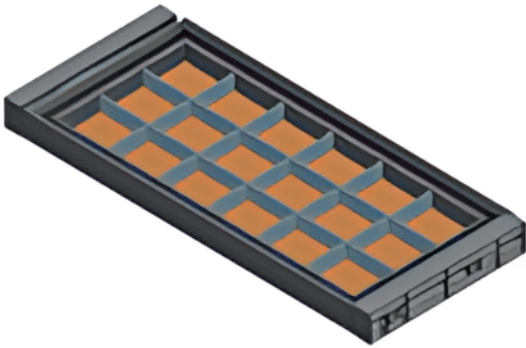
| SR24 | Item | W | H | D |
|------|--------|----|-----|----|
| | SR2424 | 24 | 3/4 | 24 |
| | SR3024 | 30 | 3/4 | 24 |
| | SR3624 | 36 | 3/4 | 24 |

| CN-GD | Item | W | H | D |
|-------|--------|----|---|----|
| | GD1281 | 12 | | 81 |
| | GD1581 | 15 | | 81 |
| | GD1881 | 18 | | 81 |
| | GD2181 | 21 | | 81 |

| CN-TR | Item | W | H | D |
|-------|-----------|----|---|----|
| | CN-TR3015 | 30 | | 15 |
| | CN-TR3615 | 36 | | 15 |

| CN-BSK | Item | W | H | D |
|--------|-------------|----|---|----|
| | CN-BSK 3015 | 30 | | 15 |
| | CN-BSK 3615 | 36 | | 15 |

| CN-OD | | Item | W | H | D |
|-------|--|------|---|---|---|
|-------|--|------|---|---|---|



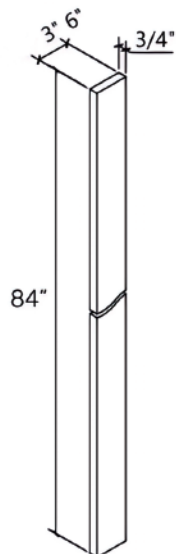
| | | | |
|-----------|----|--|----|
| CN-OD3015 | 30 | | 15 |
| CN-OD3615 | 36 | | 15 |

| CN-MIR1437 | | Item | W | H | D |
|------------|--|------|---|---|---|
|------------|--|------|---|---|---|



| | | | |
|------------|----|----|--|
| CN-MIR1437 | 14 | 37 | |
|------------|----|----|--|

| CCW-F384 & 684 | | Item | W | H | D |
|----------------|--|------|---|---|---|
|----------------|--|------|---|---|---|



| | | | |
|------|---|----|-----|
| F384 | 3 | 84 | 3/4 |
| F684 | 6 | 84 | 3/4 |

LED accessories

| CN-Transformer | Item |
|----------------|----------------|
| | CN-Transformer |



1 closet use 1 transformer

| CN-Joint Control box | Item |
|----------------------|----------------------|
| | CN-Joint Control box |



Joint control box,
 1 can control 3 cabinet light switches,
 2 can control 5 cabinet light switches,
 3 can control 7 cabinet light switches.

| CN-Extension Cord | Item |
|-------------------|-------------------|
| | CN-Extension Cord |



Extension cord, connected to the light cord,
 length 1.8M .

FEB 2025